

Kenora District Resource Mapping Project

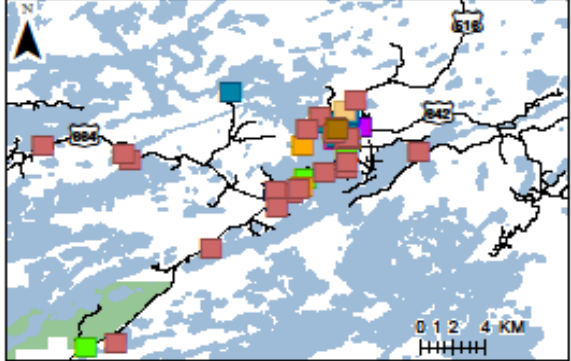
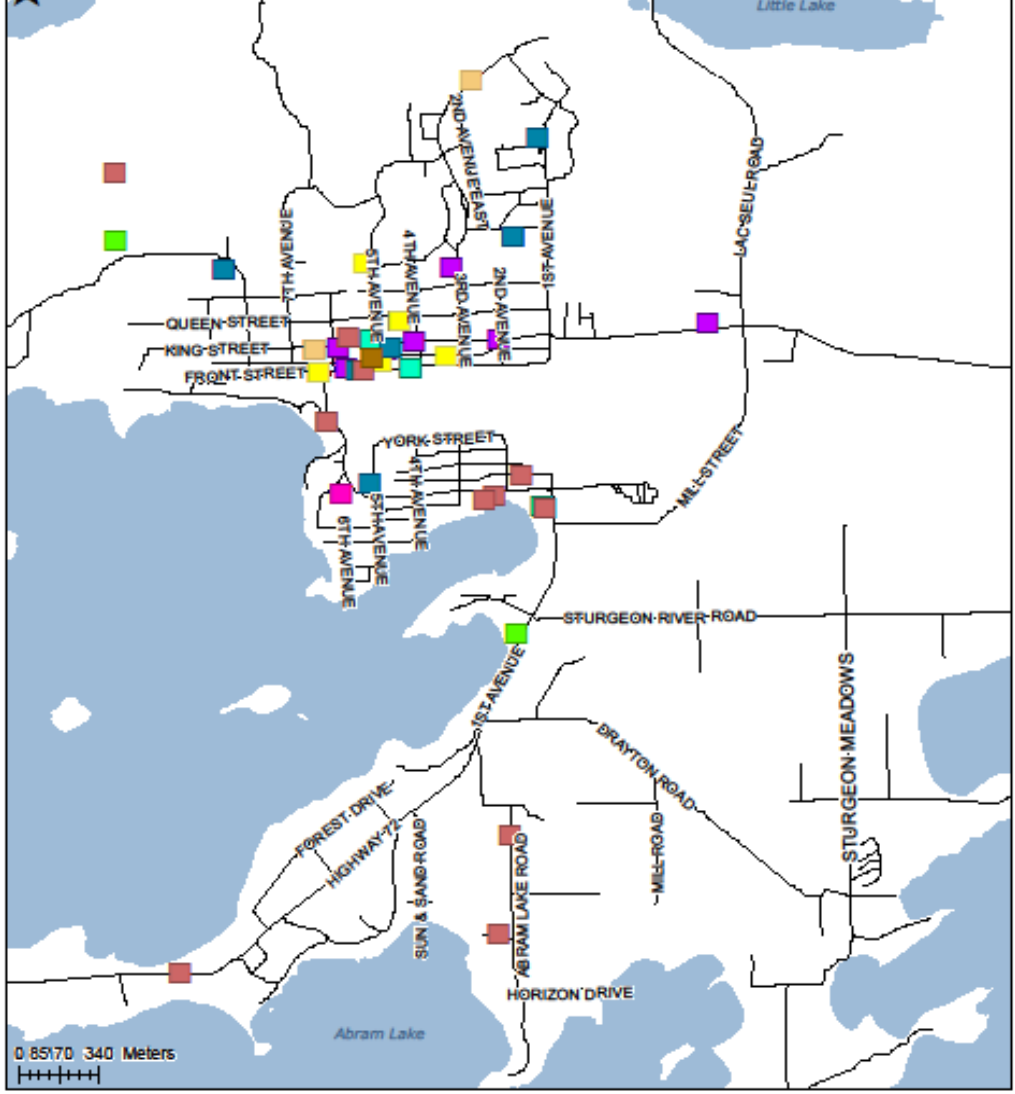
June 24th Final Report:

Appendix C

Community Maps:

- Municipality of Sioux Lookout
 - Township of Ignace
 - Municipality of Machin
 - City of Dryden
- Municipality of Red Lake
 - Township of Ear Falls
 - City of Kenora

Sioux Lookout, Kenora District: Cultural Tourism Mapping



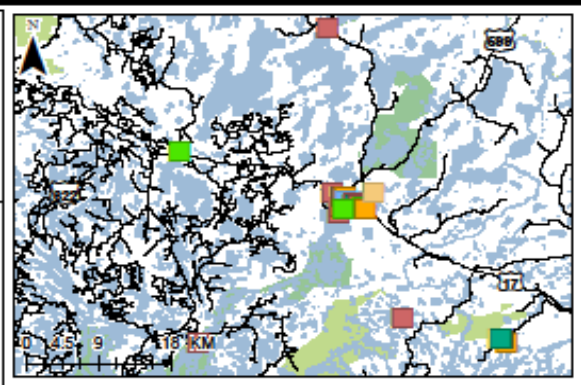
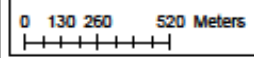
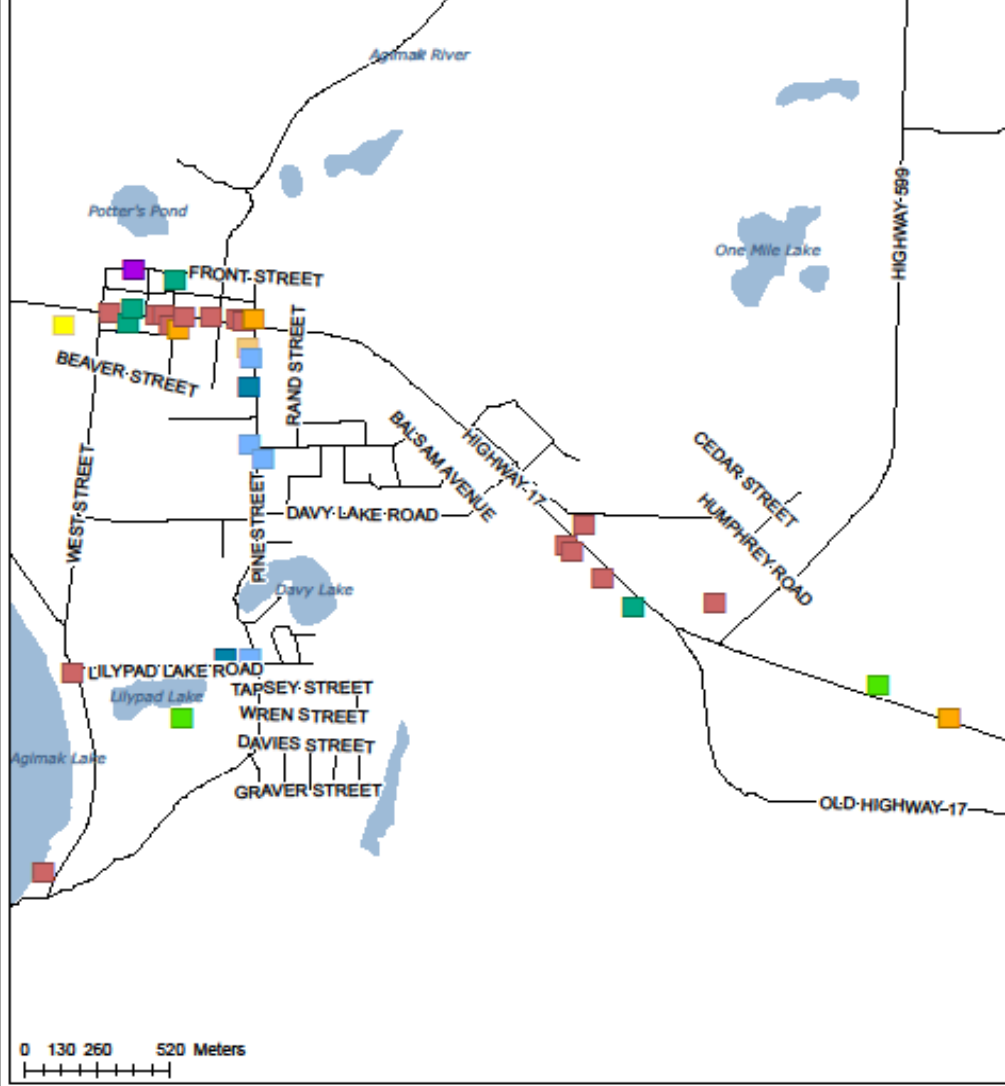
- Legend**
- Cultural Tourism Resources
 - Community Organization
 - Creative Cultural Industries
 - Cultural Heritage
 - Festivals and Events
 - Natural Heritage
 - Spaces and Facilities
 - Cultural Occupations
 - Schools
 - Community Facilities
 - Agriculture
 - Hospitality
 - Culinary Resources
 - Religious Organization
 - Information and Communication Technology
 - Ontario Road Network —
 - Provincial Park
 - Water Bodies

Map Created by: City of Dryden
 Data Source: Ear Falls,
 Marjorie Salavich and LJO
 Date Created: June 10, 2011
 UTM NAD83 Zone 15



This Map is illustrative only. Do not Rely on it as being a precise indicator of routes, locations of features, nor as a guide to navigation. A margin of error is inherent in all data and maps. This product is distributed without warranties of any kind, either expressed or implied, including but not limited to warranties of suitability of particular purpose or use. The City shall not be held liable for special, incidental, consequential or indirect damages arising from the use of this data. Users assume all risks in using this data.

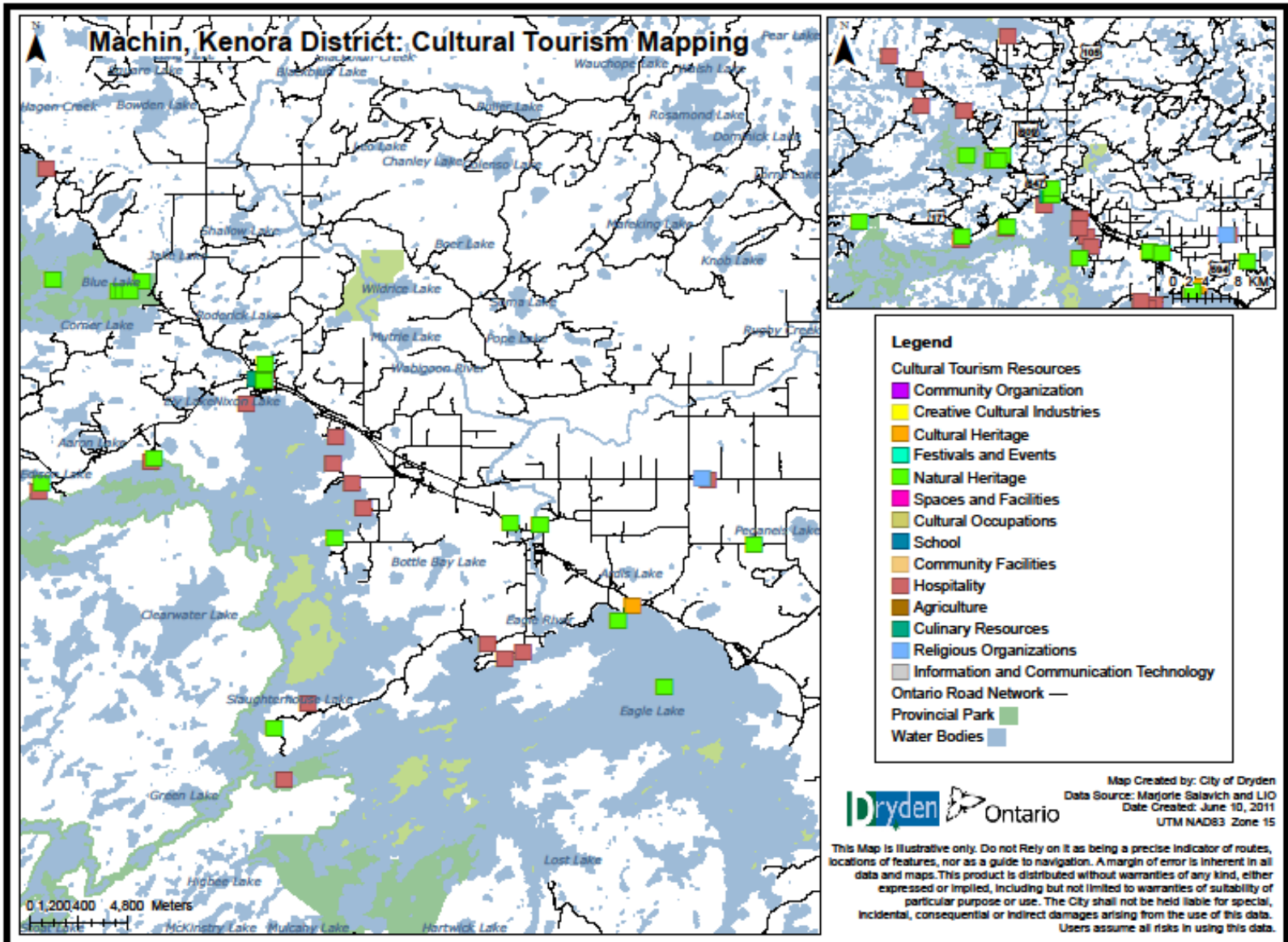
Ignace Area, Kenora District: Cultural Tourism Mapping

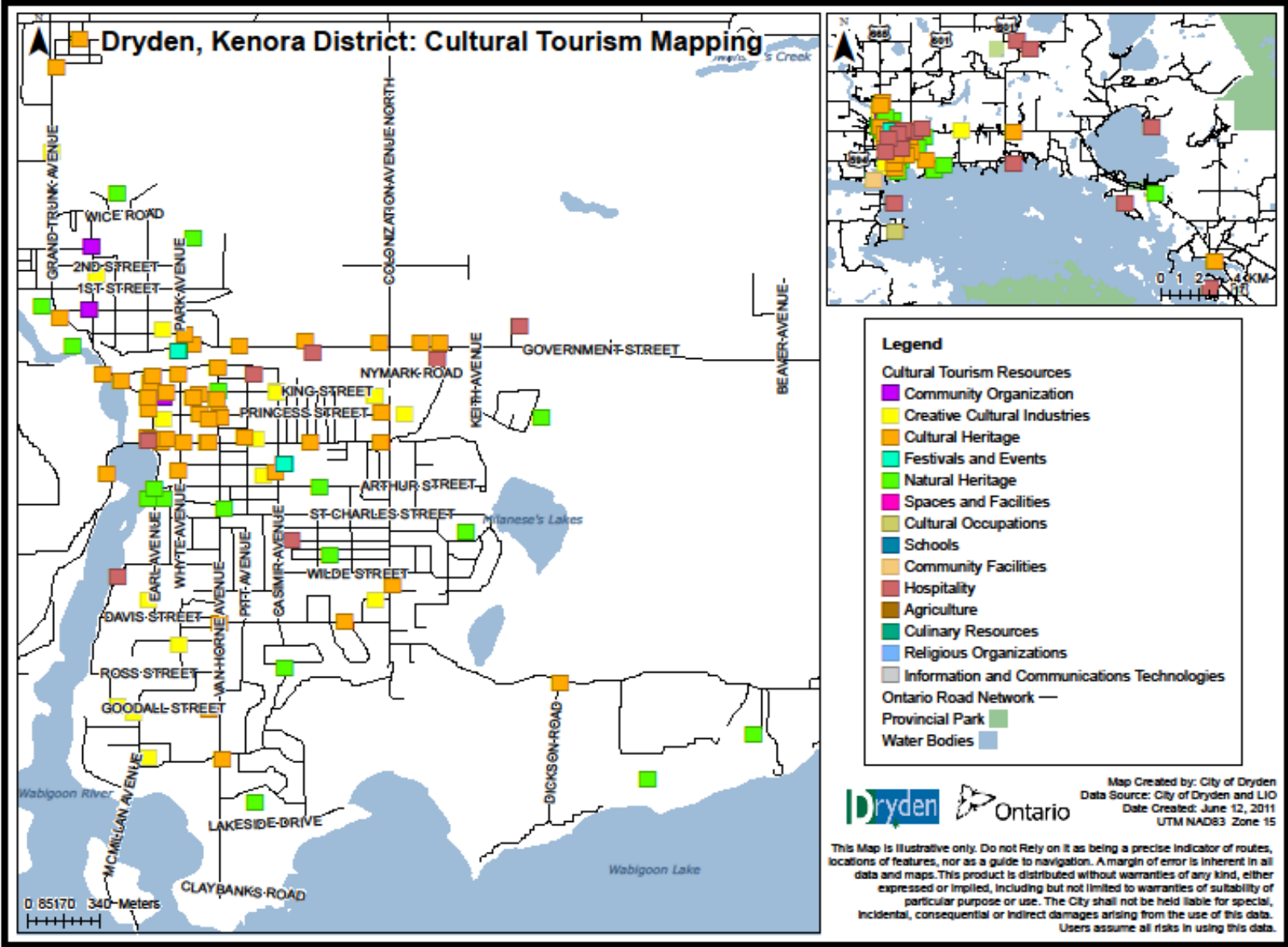


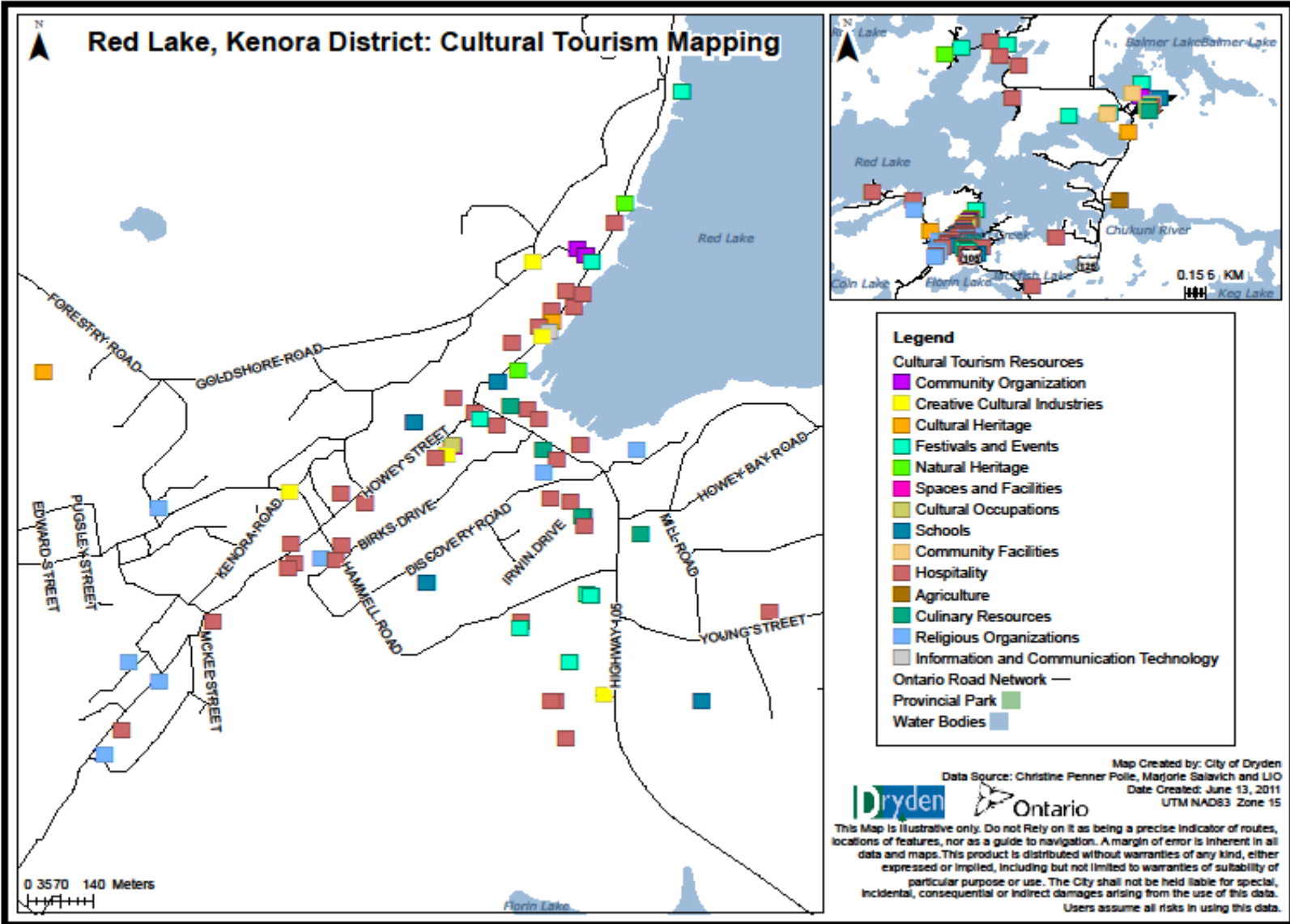
- Legend**
- Cultural Tourism Resources
 - Community Organization
 - Creative Cultural Industries
 - Cultural Heritage
 - Festivals and Events
 - Natural Heritage
 - Spaces and Facilities
 - Cultural Occupations
 - Schools
 - Community Facilities
 - Hospitality
 - Agriculture
 - Culinary Resources
 - Religious Organizations
 - Information and Communication Technologies
 - Ontario Road Network —
 - Provincial Park
 - Water Bodies

Map Created by: City of Dryden
 Data Source: Marjorie Salavich and LIO
 Date Created: June 9, 2011
 UTM NAD83 Zone 15

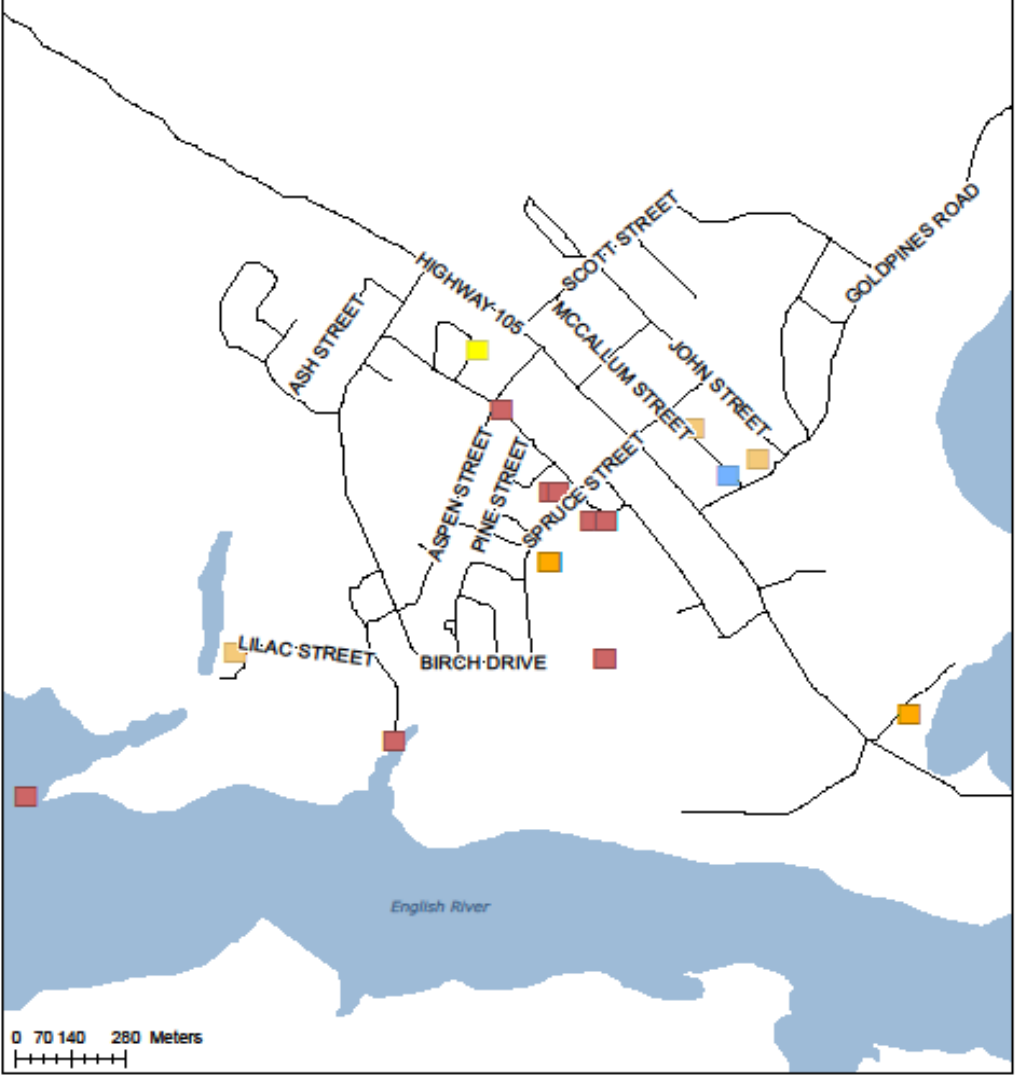
This Map is illustrative only. Do not Rely on it as being a precise indicator of routes, locations of features, nor as a guide to navigation. A margin of error is inherent in all data and maps. This product is distributed without warranties of any kind, either expressed or implied, including but not limited to warranties of suitability of particular purpose or use. The City shall not be held liable for special, incidental, consequential or indirect damages arising from the use of this data. Users assume all risks in using this data.



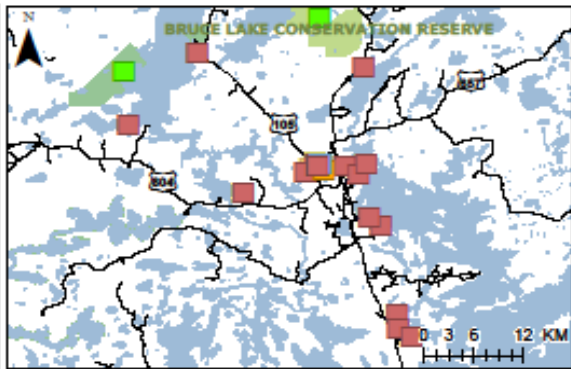




Ear Falls, Kenora District: Cultural Tourism Mapping



0 70 140 280 Meters
 +-----+



- Legend**
- Cultural Tourism Resources
 - Community Organization
 - Creative Cultural Industries
 - Cultural Heritage
 - Festivals and Events
 - Natural Heritage
 - Spaces and Facilities
 - Cultural Occupations
 - Schools
 - Community Facilities
 - Hospitality
 - Agriculture
 - Culinary Resources
 - Religious Organization
 - Information and Communication Technology
 - Ontario Road Network —
 - Provincial Park
 - Water Bodies

Map Created by: City of Dryden
 Data Source: Ear Falls,
 Marjorie Salavich and LIO
 Date Created: June 10, 2011
 UTM NAD83 Zone 15



This Map is illustrative only. Do not Rely on it as being a precise indicator of routes, locations of features, nor as a guide to navigation. A margin of error is inherent in all data and maps. This product is distributed without warranties of any kind, either expressed or implied, including but not limited to warranties of suitability of particular purpose or use. The City shall not be held liable for special, incidental, consequential or indirect damages arising from the use of this data. Users assume all risks in using this data.

