

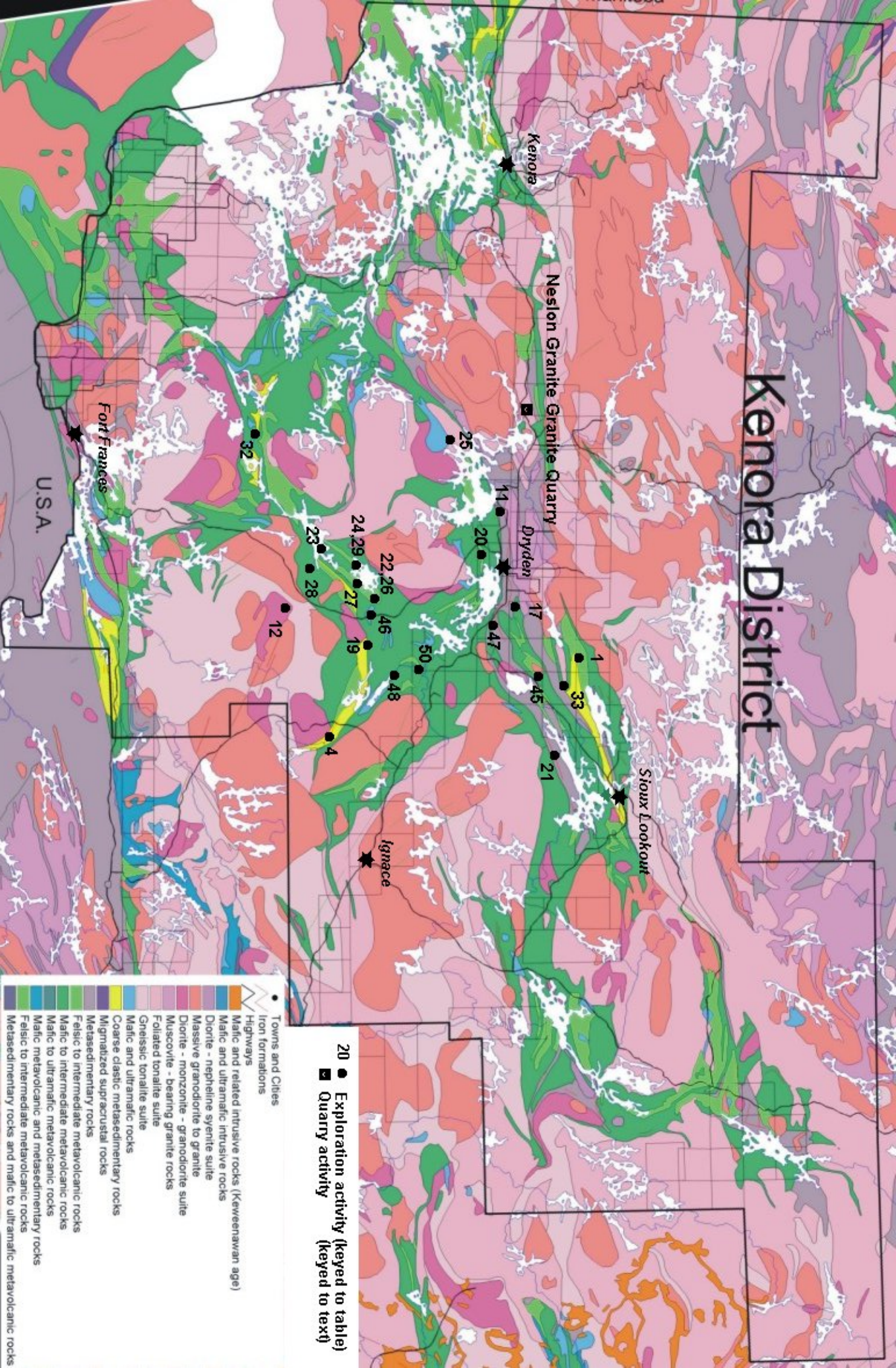
Table x. Exploration activity conducted in the Kenora District in 2011. Locations illustrated in Figure.

Abbreviations			
AEM	Airborne electromagnetic survey	IP	Induced polarization survey
AM	Airborne magnetic survey	IS	Public information sessions
Bulk	Bulk sampling program	Lc	Linecutting
CC	Channel cutting	LSS	Lake sediment sampling
Comp	Compilation	Met	Metallurgical studies
DDE	Extension of historical diamond drill hole(s)	MRE	Mineral Resource Estimate (43-101)
DDH	Diamond drill hole(s)	MS	Marketing studies
DDR	Diamond drill hole(s) re-logging	OVD	Overburden drill hole(s))
DW	De-watering underground workings	PEA	Preliminary Economic Assessment study
EBS	Environmental baseline studies	Pr	Prospecting
GEM	Ground electromagnetic survey	Samp	Sampling (other than bulk)
GC	Geochemical survey	SC	Scoping studies
GL	Geological Survey	Str	Stripping
GM	Ground magnetic survey	Tr	Trenching
GMI	Ground magnetic response interpretation	VLFEM	Very low frequency electromagnetic survey

No.	Company/Individual (Occurrence Name or Property)	Township/Area (Commodity)	Exploration Activity
1	Abitibi Mining Corp. (Centre Fire Property)	McIlraith Township (Cu, Zn, Au)	DDH, Samp
4	Bending Lake Iron Group Ltd. (Bending Lake Property)	Bending Lake area (Fe)	DDH, GL, Lc, Comp, Samp
11	Champion Bear Resources Ltd. (Plomp Farm Property)	Aubrey Township (Au, Ag)	Comp
12	Champion Bear Resources Ltd. (Eagle Rock Property)	Eagle Rock Lake area (Cu, Ni, PGE)	Comp, GL, DDH, Samp
17	International Lithium Corp. (Mavis Lake Project)	Brownridge Township (Li, Cs, Rb, Ta)	Comp, DDH, Samp
19	Laurentian Goldfields Ltd. (Thundercloud Lake property)	Boyer Lake Area (Au)	Optioned from Teck Resources, DDH 4000m, Samp
20	Laurentian Goldfields Ltd. (Van Horne Property)	Contact Bay area (Au)	DDH, Samp
21	Lucky Minerals Inc. (Minnitaki Property)	Parnes Lake area (Fe)	Comp
22	Manitou Gold Inc. (Canamerica Property)	Boyer Lake Area (Au)	DDH, Samp
23	Manitou Gold Inc. (Gaffney Extension Property)	Lower Manitou Lake Area (Au)	Property option. Comp, DDH, Samp
24	Manitou Gold Inc. (Harper Property)	Boyer Lake Area (Au)	Property option, Pr, Samp
25	Manitou Gold Inc. (Higbee Property)	Garnet Lake Area (Au)	DDH 7-798m, Samp
26	Manitou Gold Inc. (Kenwest Property)	Boyer Lake Area (Au)	DDH, Lc, Str, CC, GL, IP, Samp
27	Manitou Gold Inc. (Mosher Bay Property)	Boyer Lake Area (Au)	Property option, Pr, Samp
28	Manitou Gold Inc. (Sherridon Property)	Lower Manitou Lake Area (Au)	Lc, IP
29	Manitou Gold Inc. (West Limb Property)	Lower Manitou Lake Area (Au)	Property option, Pr, Samp
32	Mineral Mountain Resources Ltd. (Straw Beach Property)	Bluffpoint Lake area (Au)	Property option, Comp, AM, Lc, Str, GI, DDH, Samp
33	MPH Ventures Corp. (Pidgeon Property)	Echo Township (Mo, Cu)	Comp

No.	Company/Individual (Occurrence Name or Property)	Township/Area (Commodity)	Exploration Activity
45	Tamaka Gold Corporation (Goldlund Project)	Echo Township (Au)	Comp, MOU, DDH, Samp
46	Treasury Metals Inc. (Goldcliff Property)	Boyer Lake area (Au)	Pr, GL, Samp
47	Treasury Metals Inc. (Goliath Property)	Zealand Township (Au)	DDH, Met, Samp
48	United Reef Limited (Santa Maria Property)	Kawashgamuk Lake area (Au)	Comp
50	Wetelainen, H. (Pathfinder Property)	Melgund Township (Au)	GL, Comp
	Nelson GraniteLtd. (Vermilion Bay Pink Quarry)	Stone	Operator

Kenora District



● Exploration activity (keyed to table)
 ■ Quarry activity (keyed to text)

- Towns and Cities
- ▬ Highways
- ▬ Iron formations
- ▬ Mafic and related intrusive rocks (Keweenawian age)
- ▬ Mafic and ultramafic intrusive rocks
- ▬ Diorite - nepheline syenite suite
- ▬ Massive granodiorite to granite
- ▬ Diorite - monzonite - granodiorite suite
- ▬ Muscovite - bearing granite rocks
- ▬ Foliated tonalite suite
- ▬ Gneissic tonalite suite
- ▬ Mafic and ultramafic rocks
- ▬ Coarse clastic metasedimentary rocks
- ▬ Migmatized supracrustal rocks
- ▬ Metasedimentary rocks
- ▬ Felsic to intermediate metavolcanic rocks
- ▬ Mafic to intermediate metavolcanic rocks
- ▬ Mafic to ultramafic metavolcanic rocks
- ▬ Mafic metavolcanic and metasedimentary rocks
- ▬ Felsic to intermediate metavolcanic rocks
- ▬ Metasedimentary rocks and mafic to ultramafic metavolcanic rocks