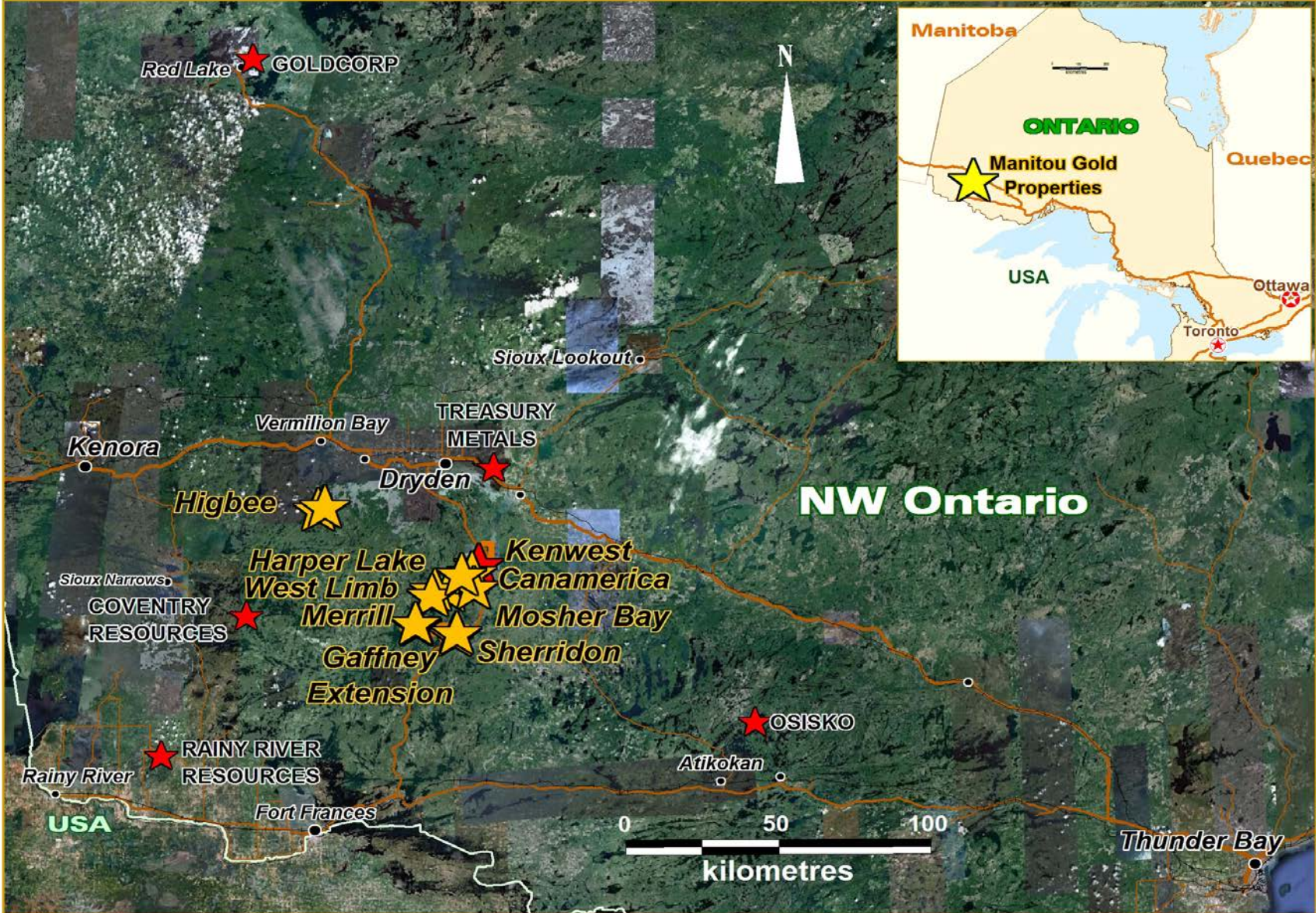


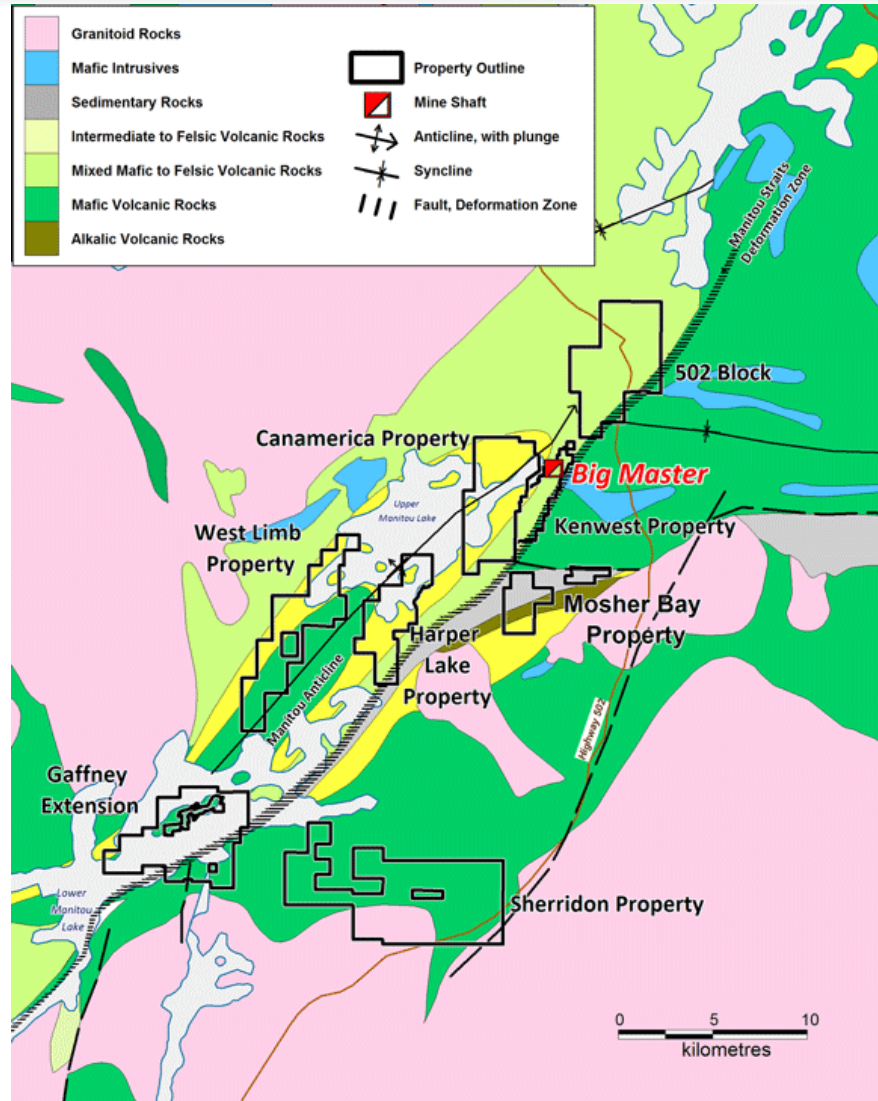
# Company Presentation

October 12, 2011

# Project Location



# Project Location



- **Exploration** - Staking, prospecting, line cutting, geophysics, mapping, trenching, diamond drilling.
- **Discovery** - Through exploration, identification of volume of mineralized material.
- **Development** - Engineering studies, Environmental studies, raising capital, construction.
- **Mining** - Extraction, milling, processing of the commodity.
- **Reclamation** - Prepare for closure and rehabilitation of the ground, ongoing monitoring of the site.



Line Cutting



Prospecting, Mapping



Sampling

Surface trench



Washing trench





Diamond Drill Rig (Land)

Diamond Drill Rig (Barge)





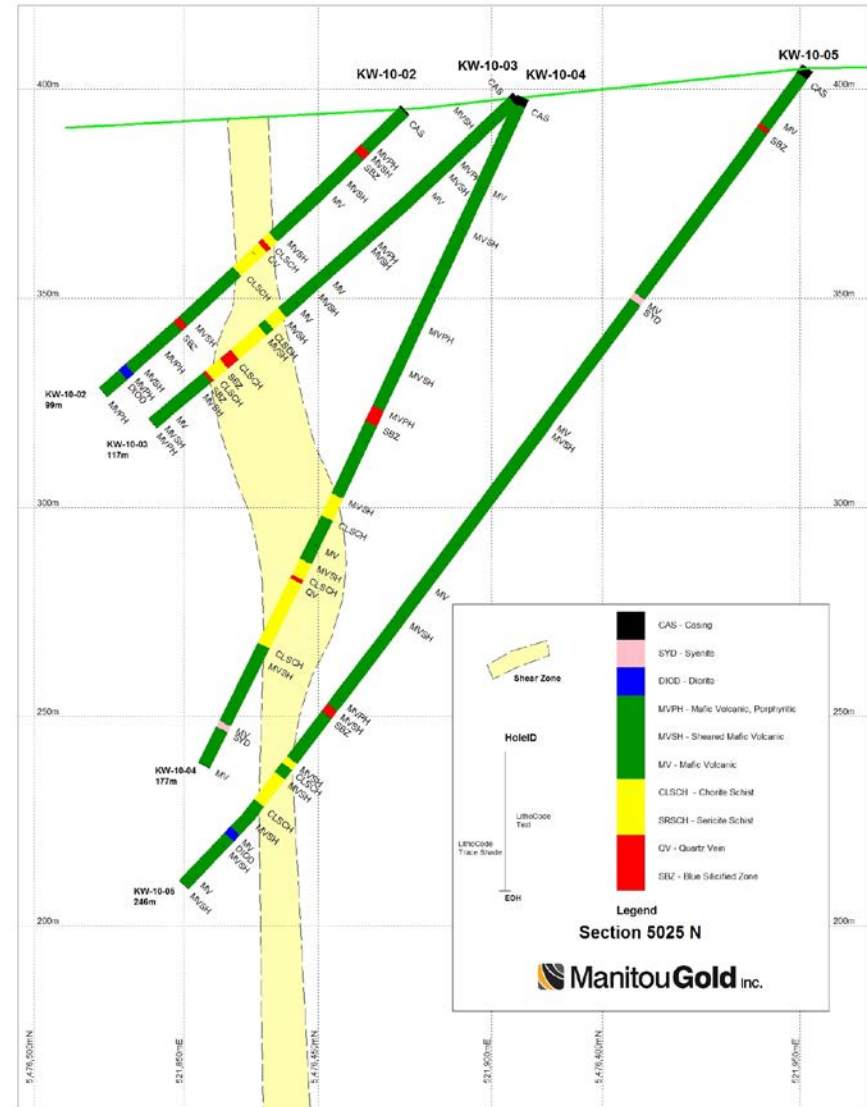
Core Shack on Former Mill Site

Drill Core



# Cross Section Through #1 Mine Horizon

- By studying the drill core, and making maps and sections, we build up an understanding of the shape of the mineralized body.



- Between 2010 & 2011 have completed ~30,000m of diamond drilling on 5 different projects
  - Kenwest (~15,300 m)
  - Gaffney (~5,700 m)
  - Higbee (798 m)
  - CanAmerica (~ 5000 m)
  - Sherridon (~3200 m)

- Currently conducting exploration level work, no resources, no mining.
- Majority of the work is contracted out (e.g. line cutters, geophysicists, drillers)
- Require specialized skill set – geologists
- Hire students during peak exploration season (spring/summer)
  - Core splitting
  - Channel sawing
  - trenching

- Hotels
- House & shop rentals
- Fuel
- Groceries / restaurants
- Computer & office supplies
- Airline flights
- Helicopter
- Equipment / truck repairs
- Core Boxes (Makoose Wood Innovation)
- Equipment contractors

- Uncertainty in the markets
- Investor confidence
- Downward trend in gold prices
- Changes to the mining act – Introduction of work permits, Far North Act, land access
  - May lead to slow down on exploration projects

**Thank You!**